

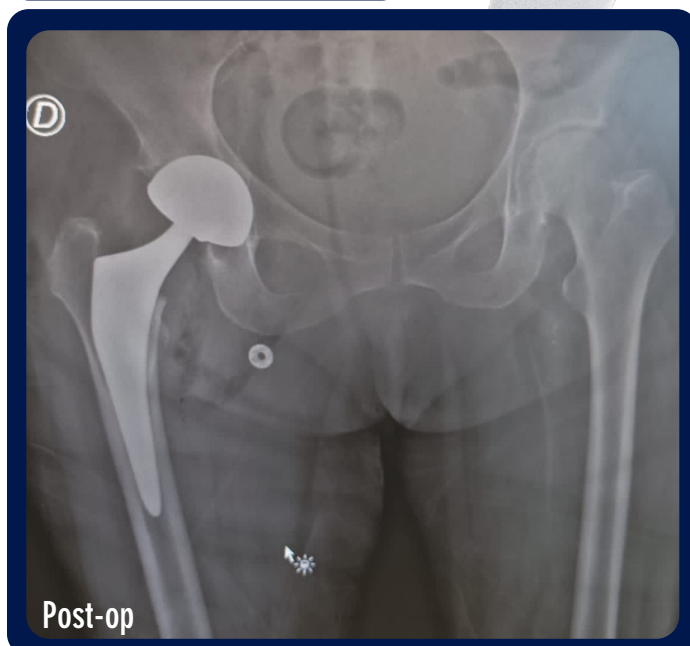
# SAPHIR

## FIRST IMPLANT OF UNCEMENTED ANTEVERTED SAPHIR STEM

Surgeon: Dr Jean-Yves BOHIC

Hospital: Centre Hospitalier d'Antibes Juan les Pins

Patient: Woman, 80 years old, BMI 22.3 with Primary coxarthrosis



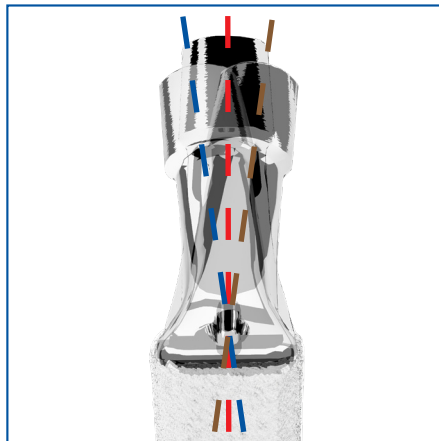
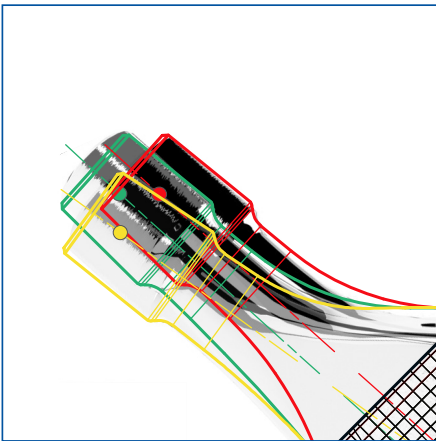
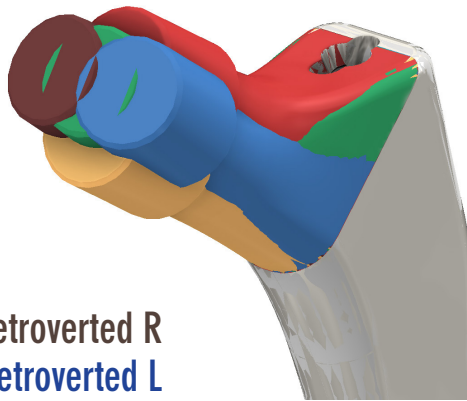


*Enjoy Mobility*

## OPTIMAL RECONSTRUCTION IS ESSENTIAL IN TOTAL HIP REPLACEMENT

SAPHIR STEM system range responds to this need, by OFFERING DIFFERENT TYPES OF NECK, all characterized by a **HOMOTHETIC** and **PROGRESSIVE INCREASE** with respect to the size of the stem: as the size of the stem increases, increases the length of the neck.

- **Standard 132°**
- **Lateralized 132°**
- **Varized 126°**
- **Anteverted L – Retroverted R**
- **Anteverted R – Retroverted L**



*Enjoy Mobility*

**GRUPPO BIOIMPIANTI S.R.L.**

Via Liguria 28, 20068 Peschiera Borromeo (Milan) Italy

Tel. +39 02 51650371 - Fax +39 02 51650393

[info@bioimpianti.it](mailto:info@bioimpianti.it)

[bioimpianti.it](http://bioimpianti.it)