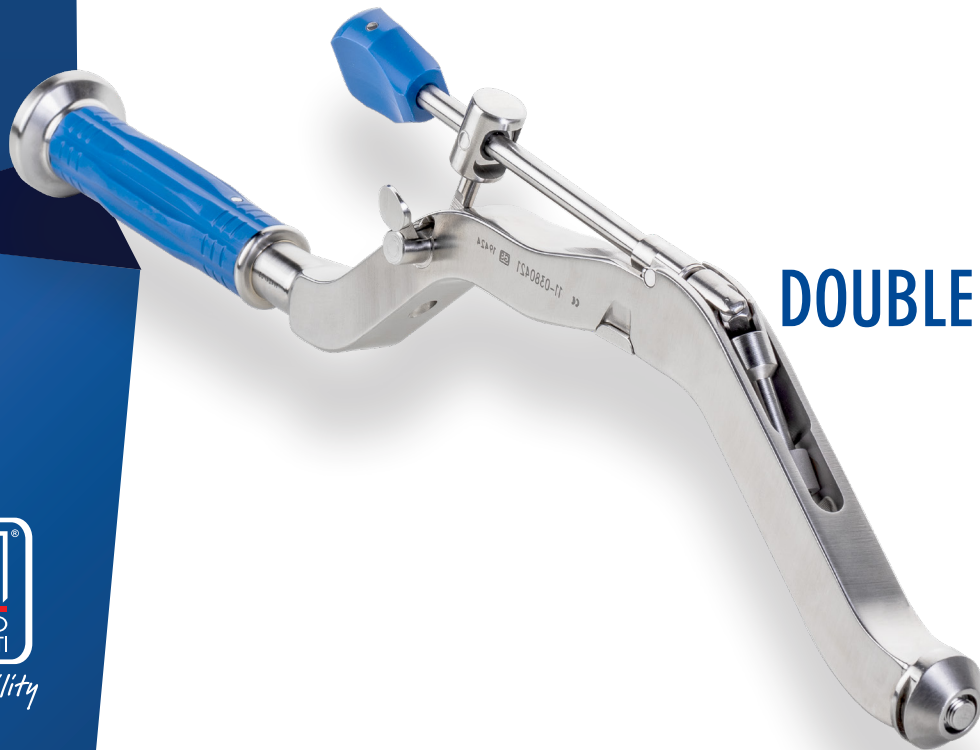


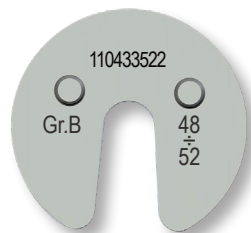
ANTERIOR APPROACH

KIT DUALIS

DOUBLE MOBILITY CUP



Enjoy Mobility



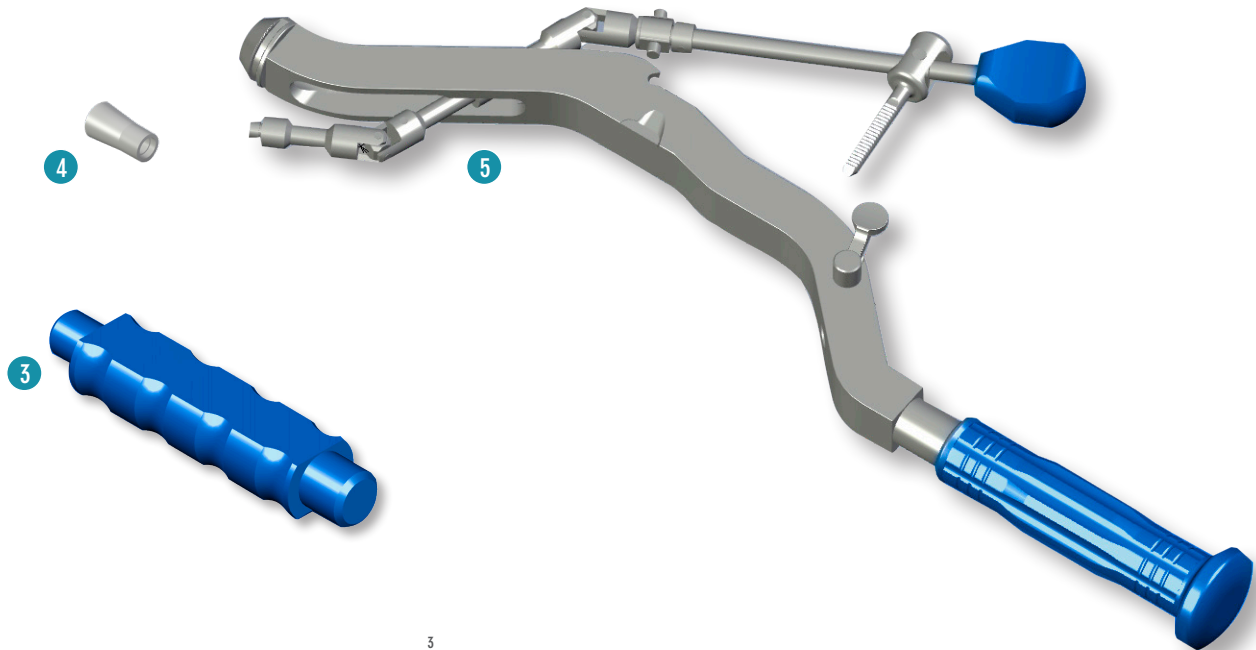
1 Metal plate



2 Insert

DESCRIPTION	GROUP	REF	SIZE
Metal plate	A	110433520	42,44,46
	B	110433522	48,50,52
	C	110433524	54,56,58
	D	110433526	60,62,64
	E	110433528	66,68,70,72
Insert	A	110433542	42
		110433544	44
		110433546	46
	B	110433548	48
		110433550	50
		110433552	52
	C	110433554	54
		110433556	56
		110433558	58
	D	110433560	60
		110433562	62
		110433564	64
	E	110433566	66
		110433568	68
		110433570	70
110433572		72	

	DESCRIPTION	GROUP	REF	SIZE
3	Inserts Extractor	-	110433532	-
4	Cone	-	110433530	-
5	Offset impactor	-	110380421	-

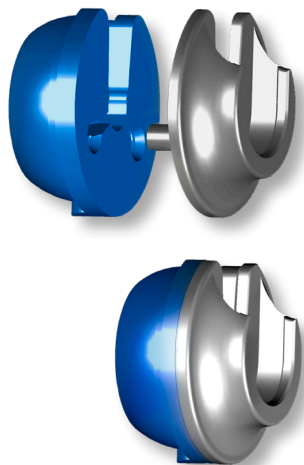


1

ASSEMBLY OF METAL PLATE - INSERT

Having completed the sizing of the acetabulum using the trial cup, proceed with the mounting of the metal plate (Ref. 110433520 ÷ 110433528) on the insert (Ref.110433542 ÷ 110433572).

Mount the impactor insert corresponding to the size of the definitive cup on the metal plate by inserting the pins on the surface of the plate in the holes of the insert.

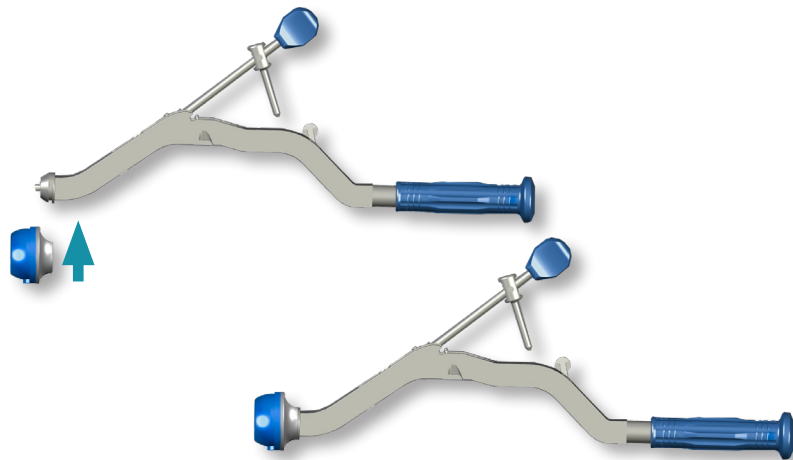
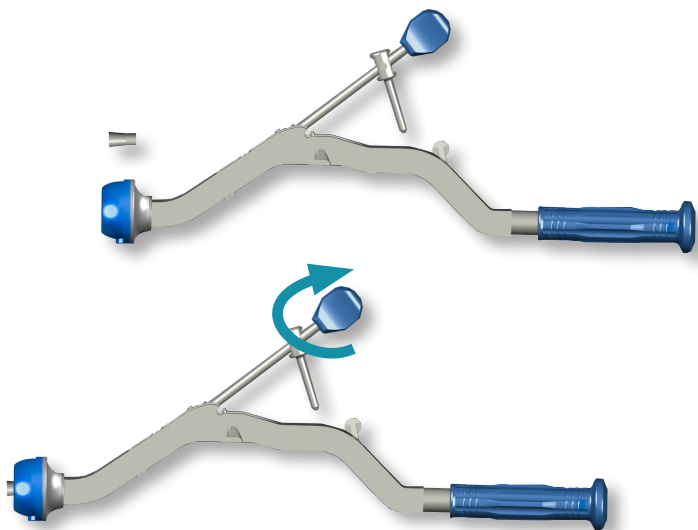


Groups from A to D can be coupled with 3 different sizes of impact inserts; group E, on the other hand, mates with 4 sizes (from 66 to 72).

PLATE GROUP	REF	SIZE
A	110433542	42
	110433544	44
	110433546	46
B	110433548	48
	110433550	50
	110433552	52
C	110433554	54
	110433556	56
	110433558	58
D	110433560	60
	110433562	62
	110433564	64
E	110433566	66
	110433568	68
	110433570	70
	110433572	72

2 ASSEMBLY OF IMPACTOR - INSERT

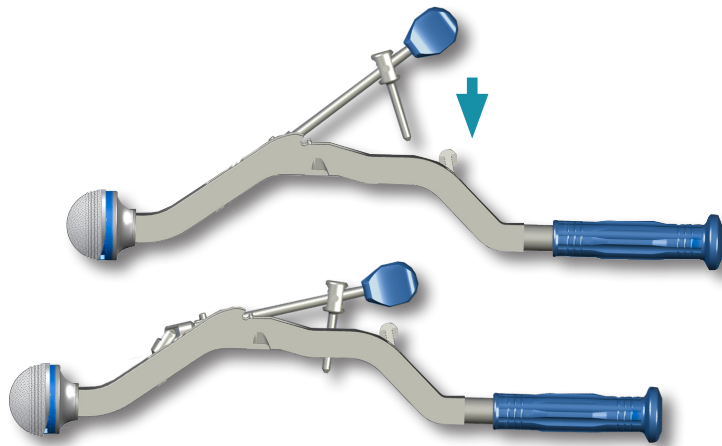
Keeping the lever raised, mount the insert-plate assembly on the offset impactor (Ref. 110380421).



3 CONE ASSEMBLY

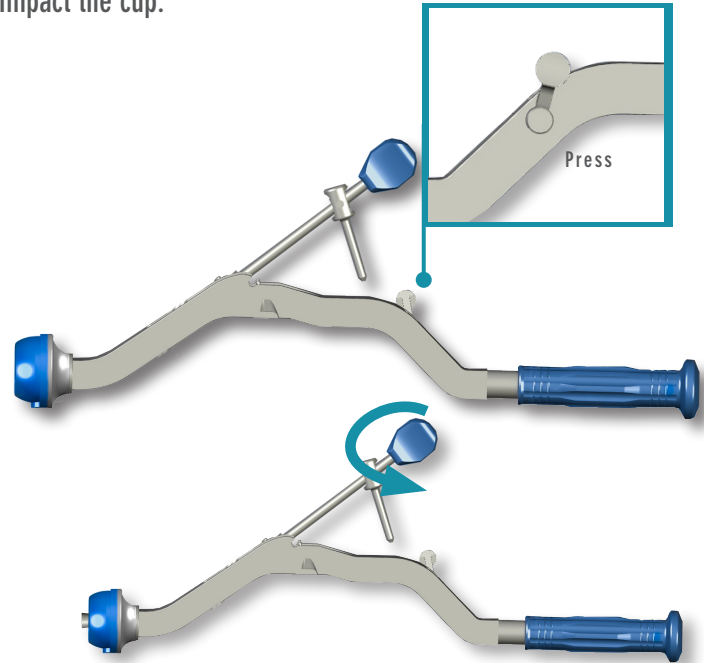
Mount the expansion cone (Ref. 110433530) on the screw.

Lock the cone (Ref. 110433530) on the screw by turning the blue terminal of the locking device clockwise.



DEFINITIVE IMPLANT REDUCTION 4

Mount the definitive cup on the impactor insert and lower the lever. Impact the cup.



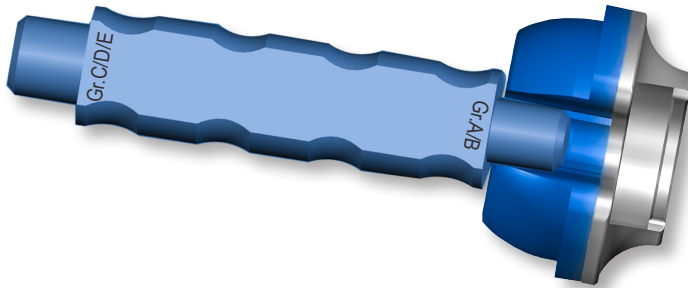
5 RELEASE OF THE DEFINITIVE CUP

To release the definitive cup, press the release button on the edge of the handle. Then remove the expansion cone by turning the device counterclockwise.

DISASSEMBLY OF METAL PLATE - IMPACTOR INSERT

6

To disassemble the metal plate from the impactor insert, use the insert extractor (Ref. 110433532) to push it along the groove until it detaches.





Enjoy Mobility

GRUPPO BIOIMPIANTI S.R.L.

Via Liguria 28, 20068 Peschiera Borromeo (Milan) Italy
Tel. +39 02 51650371 - Fax +39 02 51650393

info@bioimpianti.it

bioimpianti.it



ANTAPP-DUALIS-0T-001 REV 00 2019